

FKD 10 XL

Item no. 40013

Document type: **Product card**

Document date: **2016-11-12**

Generated by: **Systemair Online Catalogue**

Description

- Mixed-flow impeller
- 100% Speed-controllable
- Integral thermal contacts
- Air stream temperatures up to 140 °F

Application

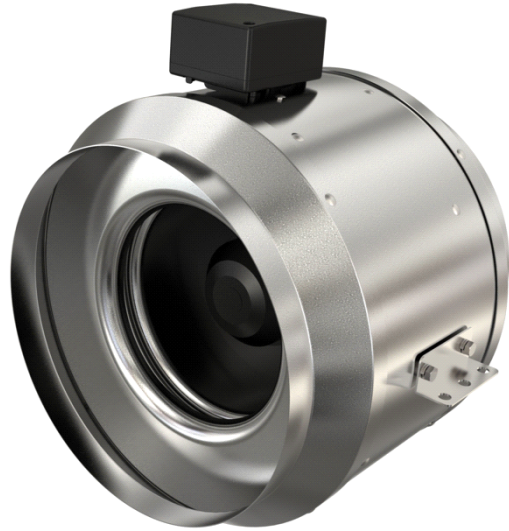
Fantech FKD direct drive, mixed flow fans blend the high air flow of axial fans with the higher pressure, non-overloading characteristics of backward curved impellers. An excellent choice for exhaust or supply applications where quieter performance and easy installation are important. Perfect for commercial and institutional structures such as offices, hospitals, beauty salons, veterinary clinics as well as residential applications such as kitchen range hood exhaust.

Design

The casing is manufactured from galvanized sheet metal. The Series have external rotor motors with a mixed flow impeller, which reduces the external dimensions of the fans. Brackets are supplied with the fans to make installation easier.

Motor protection

To protect the motor from overheating the fan has integral thermal contacts with leads to a motor protection device.



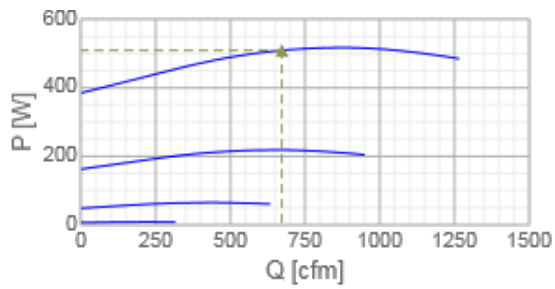
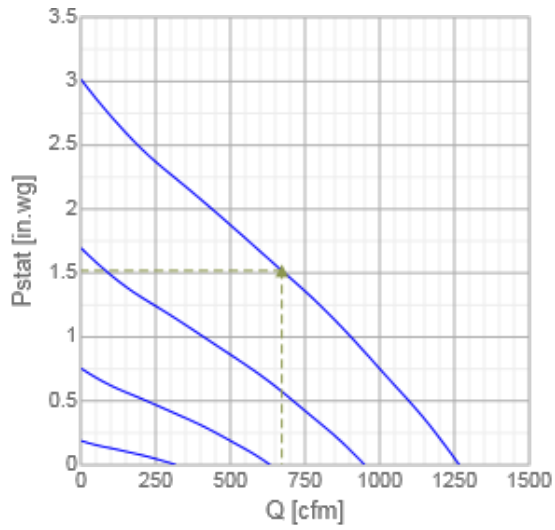
Technical parameters

Nominal data		
Voltage	115	V
Frequency	60	Hz
Phase	1	~
Input power (P1)	485	W
Current	4,84	A
Max. airflow	1267	cfm
Fan impeller speed	2889	r.p.m.
Weight	11,8	kg
Temperature data		
Max. temperature of transported air	60	°C
Protection / Classification		
Insulation class	B	
Enclosure class, motor	IP44	IP
Others		
Certificate	AMCA Air, AMCA Sound, cULus	

EPS diagrams

Performance

Diagrams



Hydraulic data

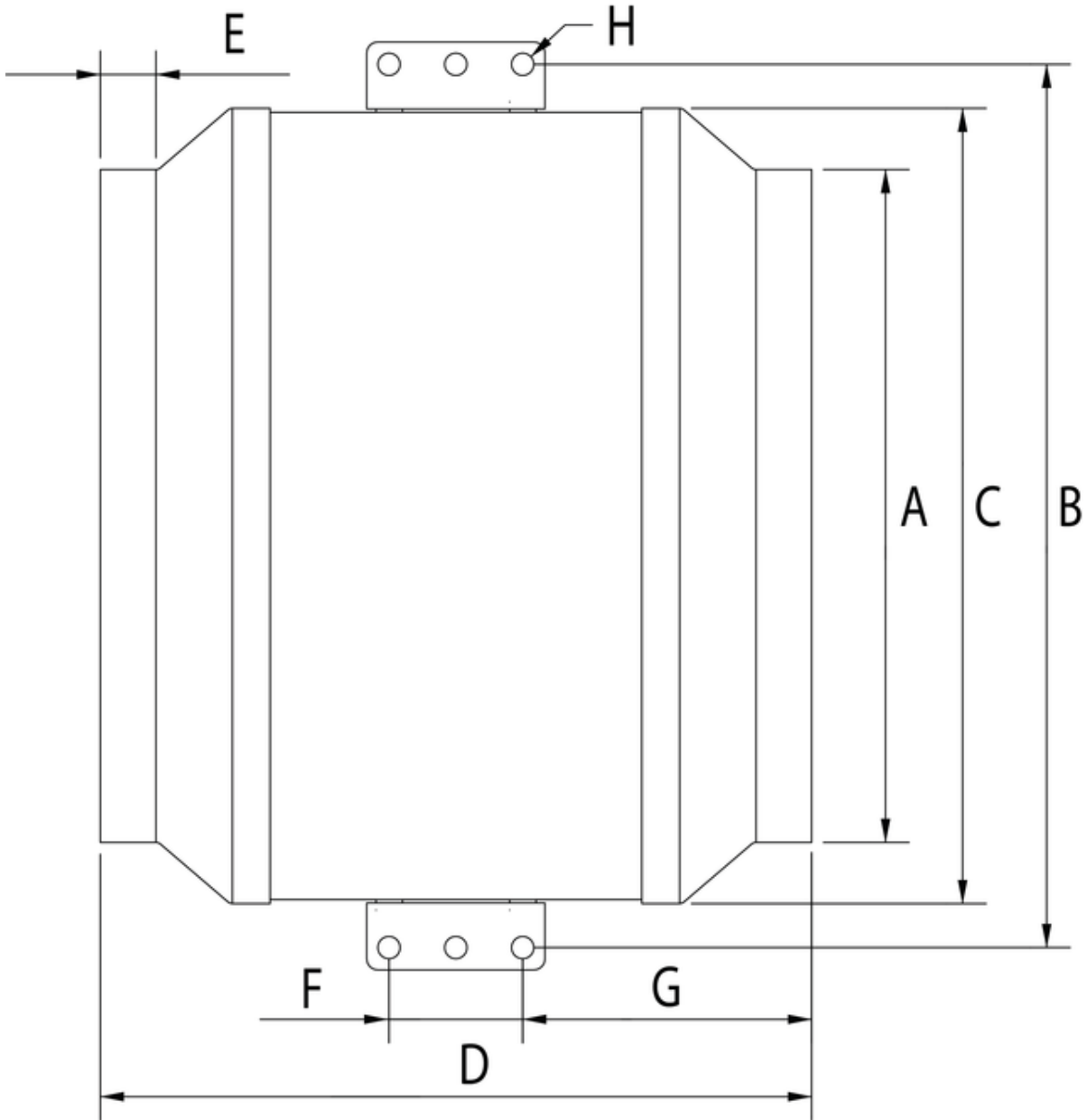
	Working point						
	Q [cfm]	Ps [in.wg]	P [W]	n [r.p.m.]	I [A]	SFP [kW/(m ³ /s)]	U [V]
Max efficiency	673	1,52	509	2717	-	1,6	115

Acoustic data

Sound power level	63	125	250	500	1k	2k	4k	8k	Tot
Inlet dB(A)	50	68	72	79	76	74	74	71	83

Loudness

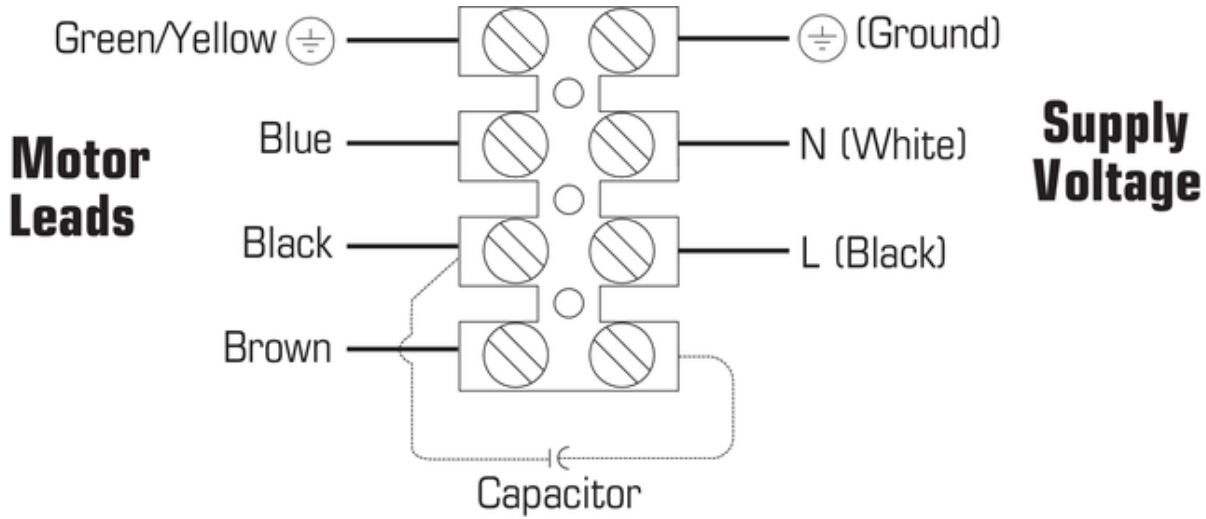
Dimensions



Model	A	B	C	D	E	F	G	H
8XL	8 (203)	14 (356)	12 1/2 (318)	15 1/2 (394)	3/4 (19)	2 3/8 (60)	6 1/8 (156)	3/8 (10)
10	10 (254)	14 (356)	12 1/2 (318)	12 1/2 (318)	3/4 (19)	2 3/8 (60)	5 (127)	3/8 (10)
10XL	10 (254)	15 5/8 (397)	14 (356)	15 (381)	3/4 (19)	2 3/8 (60)	6 3/8 (162)	3/8 (10)
12	12 (305)	15 5/8 (397)	14 (356)	12 1/2 (318)	3/4 (19)	2 3/8 (60)	5 1/8 (130)	3/8 (10)

Dimensions in inches (mm)

Wiring



Accessories


Electric accessories


RPE10 (411101)


Accessories

RC10, Roof Cap 10" (411314)
 SHL42 (411316)
 IR10, Iris Damper 10" (411238)
 LD10, Silencer, 10" Dia Duct (411286)
 RSK10, Damper (411116)
 FC 10, Clamp, 2Pcs Kit (411122)
 FML10 Exh./Sup.Hood, 10" (45149)


Documentation

 401339 FKD OIPM EN FR ES.pdf (1,05MB)

 450396 FKD Brochure EN - Canada.pdf (298,68kB)

 450368 FKD Submittal Sheet EN.pdf (134,06kB)

 450420 FKD Guide Spec EN.pdf (69,80kB)

 40013.dxf (907,53kB)